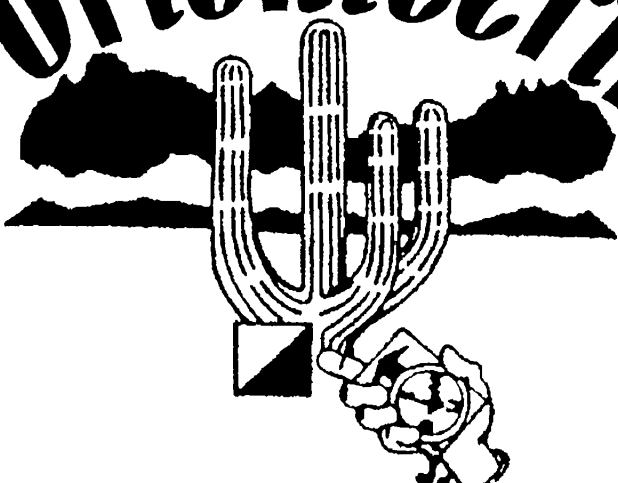


---

# Tucson Orienteering Club



---

July 2000

---

## “Cool” Bear Wallow, July 16

—Greg and Carol Starr

Sunday, July 16, finds us back in the cool pine country of Mt. Lemmon. This time we will be orienteering around the Bear Wallow area, which is near the Mt. Bigelow observatory. Remember that the temperature can drop drastically if rain falls, so be prepared.

Ron Hudson has designed five courses ranging from White to Red. Greg and Carol Starr (743-7052) are meet directors as well as course setters (first time for setting the courses). We will need a lot of help with registration, timing, and control retrieval. If you do not call us, we will call you.

We are not aware of any reserved camping at Bear Wallow, but there should be available camping somewhere nearby.

**Directions:** Take Catalina Highway approximately 21 miles to Mt. Bigelow Road, about a mile past Palisades Ranger Station. Turn right on Mt. Bigelow Road and look for TSN signs. You will go approximately 1/4 mile to the first junction, near the observatory entrance. Park along road.

**Fees:** \$8/individual, \$10/team (plus \$1 per map for color maps, when used). \$5 discount for TSN, PHX, USOF, or SAHC members. Compasses rent for \$1. Safety whistles sell for \$1. *Every person, all courses, all meets* is required to carry some type of safety whistle.

**Schedule:**

9:00 a.m. Registration opens. Beginners' clinic starts. (**Instructor needed!**)

9:30 a.m. Courses open. (**Volunteers needed for timing.**)

12:00 noon. Last time to start a course.

12 noon-2 p.m. Route choice reviews

2:00 p.m. Courses close. Begin control retrieval—good orienteering practice, lots of help always needed. Volunteer before 2 p.m. with the meet director.

**Check-In:** To insure that all are safe *everyone, whether finished with the course or not*, must check in formally at Start/Finish before leaving the meet site.

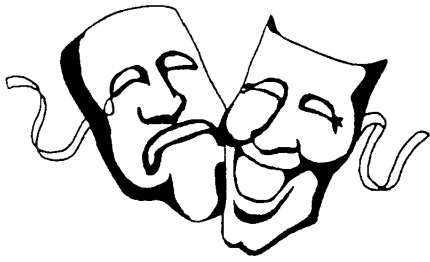
**Newcomers:** Go directly to Registration. Ask for instructions and introductory information. To attend the beginners' clinic, arrive between 8:45 and 9 a.m.

**Route-Choice Reviews:** Between noon and 2 p.m., the course setter or an advanced orienteer will discuss route choices with returning participants probably near Start/Finish area.

---

## Results from the July 18 meet at Palisades will be in the August newsletter.

---



### Good News, Bad News

**Good News:** Mike Thompson is taking over as permit chair. And he's also going to meet direct in August at Lincoln. Thanks, Mike.

**Bad News:** The board is still missing a secretary/treasurer. A volunteer is needed.

**Bad News:** We need a course setter for Lincoln Park in August. *No course setter will result in the meet being cancelled.*

**Bad News:** We do not yet have a course setter for the State meet in October. While it has been suggested that the Route 83 maps be used, the one who sets the meet can choose any of the TOC map locations. One can set either or both days. Since these days will be used in the Western Ranking Series and we can expect out-of-towners, and since it is also our Arizona State Championship meet, it would certainly be a pity to have to cancel this meet.

Does it seem as if the Bad News outnumbers the Good News? You can help change that!!

#### Newsletter Submittals

The deadline for newsletter items is shown in the monthly calendar. Please try to meet the deadline, or call the editor

if there is a problem. All members are invited and encouraged to send informational or opinion articles on any orienteering topic.

Phone 296-2108 Fax 290-8071

E-mail loiskim@aol.com

US mail 9055 Calle Bogota,

Tucson, Arizona 85715

Lois Kimminau, Editor

## Pacific Region Ranking Process

Tucson Orienteering Club members who attend all or part of the Convention and Sierrafest by Lake Tahoe July 29-August 6 will qualify for ranking when combined with our two-day state champs. The USOF Pacific Region Ranking Series 2000 is as follows:

April 1	SDO Camp Ole Flat B-meet
June 17-18	LAOC Mt. Pinos two-day B-meet
July 29	GCO Spooner Lake B-meet
August 2	BAOC Sawmill Flat A-meet
August 5-6	BAOC Burton Creek 2-day A-meet (Pacific Region Championships)
October 14-15	Arizona State Championships B-meet
November 11	SDO Mt. Laguna B-meet

Basics:

1. Open to all orienteers living in the USOF Pacific Region for more than six months of the calendar year 2000
2. One must participate in at least four events in the same category (exception noted below) within the calendar year 2000 to be ranked. (Participation is defined as running a course, being the meet director or course setter for a Pacific Region ranking event.)
3. Ranking is for individuals only, no groups
4. The A-meet event results will be based on only the Pacific Region participants (i.e., results from non-resident participants will be ignored).
5. For each course, the top three finish times will be averaged to form the base time. The base time will be divided by each participant's time and multiplied by 80 ranking points. The resulting number of ranking points is what participant score for that event. Each participant is then placed in their designated category.
6. Interim results will be published by e-mail following the August events, and after Tucson's event in October. Any corrections to interim information will be corrected in the next publication. A final listing will be published after SDO's November event. No category corrections will be allowed at that time.

For further information on categories, rules, and scoring details, contact Peg Davis, 628-8985.



## Business Meeting

—Peg Davis

The next business meeting will deal with two questions: How can the club have enough people to work at meets? How should map funds be used to improve or create maps for the TOC?

Since these topics are complex and likely to provoke debate, feel free to present ideas to me beforehand and I'll have a handout ready. At the meeting, discussion must be kept concise. I'll be using a timer.

All members are encouraged to attend and participate on Wednesday, July 12, at 6:30 p.m. at 2241 East Parkway Terrace. Call Peg at 628-8985 for directions or if you have questions.

## CLUB CALENDAR

### July 16, Bear Wallow on Mt. Lemmon

Course Setter: Ron Hudson  
 Course Vetter: Greg Starr  
 Meet Directors: Greg and Carol Starr

### July 12, Business Meeting

6:30 p.m., at the home of Peg Davis. See page 2 article.

### July 24, Newsletter Deadline

Submittal information on page 2.

### August 20, Lincoln City Park

Course Setter: Vacant  
 Course Vetter: Vacant  
 Meet Director: Mike Thompson

### September 16-17, Mogollon Rim Special Event

Course Setter: John Maier (520-586-7300)  
 Course Vetter: Vacant  
 Meet Director: Vacant

### October 14-15, State Champs, Down Route 83

Course Setter: Vacant  
 Course Vetter: Vacant  
 Meet Director: Vacant

### November 19 (& maybe 18), Silver Bell Mountains

Course Setter: Dan Coombs (322-9758)  
 Course Vetter: Vacant  
 Meet Director: Vacant

### December 17, Cat Mountain

Course Setter: Jeff Brucker (886-2528)  
 Course Vetter: Vacant  
 Meet Director: Vacant



TSN Club meets are held regularly on the third Sunday of the month, year-round.

Experienced course setters are usually happy (with advance notice of about a month) to work with apprentices who want to learn to set courses. If there is enough interest, separate training for course setting can be organized.

Directing a meet consists essentially of setting up and supervising the Registration and Timing areas, with help from other volunteers. Teams of two are encouraged.

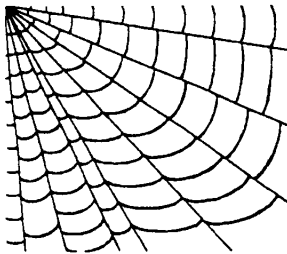
Please call Peg Davis at 628-8985 if you can help with any of these meets.

### 1999-2000 TUCSON ORIENTEERING CLUB OFFICERS

President	Peg Davis	pegdavis@u.arizona.edu	628-8985
Secretary/Treasurer	VACANT		
Membership	Jeff Brodsky	jabrodsky@worldnet.att.net	886-6304
Mapping	Wilkey Richardson		529-1105
Equipment	Mary English		881-4786
Permits	Mike Thompson	michaelt@LPL.arizona.edu	743-8161
Publicity/Education	Carol Brucker	carolbrucker@prodigy.net	886-2528
Newsletter Editor	Lois Kimminau	loiskim@aol.com	296-2108

Tucson Orienteering Club  
P O Box 13012  
Tucson, AZ 85732

Address Service Requested



Check out the Tucson Orienteering Club web site!  
<http://www.fortunecity.com/greenfield/bypass/733/>  
or type: **go.to/tucsonorienteering**  
Also, for links to all the West Coast club sites,  
just type **http://go.to/sconet**

### Tucson Orienteering Club Membership Application

Check one: New Member       Renewal       Date on label \_\_\_\_\_

Check one: Individual (\$10)       Household (\$15)

Name: \_\_\_\_\_      Telephone: \_\_\_\_\_

Address: \_\_\_\_\_      E-mail: \_\_\_\_\_

Can you help staff a club meet?  Yes, call me.

Members receive a monthly newsletter, have voting privileges and access to Club library,  
and receive a \$5 discount per meet. Make checks payable to Tucson Orienteering Club  
and send to P. O. Box 13012, Tucson, AZ 85732.