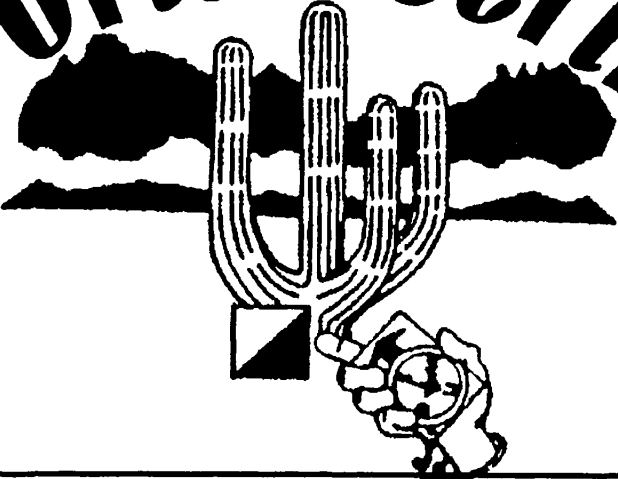


---

# Lincoln Orienteering Club



---

August 2000

---

## August Early-O at Lincoln Park

—Sue Roberts & Roger Sperline

Having visited the cooler sites on Mount Lemmon for the past few months, it's time now for the traditional summer Early-O, in Lincoln Park this year. For those of you willing to rise bright and early on a Sunday morning, we'll have three courses: White, Yellow, and an, er, what's orange and green make when you mix them together—Brown?? Well, let's forget the colors and call it a Variety-O.

What's a Variety-O? Well, I don't know all the details, yet. When you leave the start you won't have a map. You may pick up maps, pieces of maps, and/or other information along the way. Some of the maps may have missing information (cut-outs or missing trails), some of the legs may be memory legs, some may be line-O legs. Anything to keep it interesting in the small area we have for orienteering. This course will be suitable for anyone who's done Orange level courses. Even those of you who've been doing Yellow courses may want to try it since the park is so small—just remember to keep your wits about you.

We're going to try a new method of running the meet. Meet participants may be requested to spend a short shift at the registration or timing tables. If you are experienced at this, your offer to help will be appreciated. If you're new to the club, this will be a good opportunity to learn the mechanics of running a meet from more experienced members. As usual, please see the Meet Director (Mike Thompson, 742-9687) to volunteer to staff the tables or to collect controls after the courses close.

A beginner's clinic will be held at 7:15 a.m., and upon demand until the courses close. We should have controls picked up and be heading for cooler areas well before noon.

**Directions:** From Kolb Road and 22<sup>nd</sup> Street, go east about 3/4 mile to Pantano Road (*not* Pantano Parkway). Turn south and continue about 2 miles. You will see Santa Rita High School on the southeast corner of Pantano Road and Escalante. Just past the school grounds, turn left into the park entrance.

**Fees:** \$8/individual. \$10/team. \$5 discount for TSN, PHX, USOF, or SAHC members. Compasses rent for \$1.

Safety whistles sell for \$1. *Every person, all courses, all meets* is required to carry some type of safety whistle.

**Schedule:**

7:15 a.m. Registration begins. Beginners' clinic starts.

7:30 a.m. Courses open.

9:00 a.m. Last time to start a course.

10:30 a.m. Courses close. Begin control retrieval—good orienteering practice, lots of help always needed. Volunteer before 8 a.m. with the Meet Director.

**Check-In:** To insure that all are safe, *everyone, whether finished with the course or not*, must check in formally at Start/Finish before leaving the meet site.

**Newcomers:** Go directly to Registration. Ask for instructions and introductory information. To attend the beginners' clinic, arrive between 7 and 7:15 a.m.



# Wallowing at Bear Wallow

—Greg & Carol Starr

What a weekend we had at Bear Wallow July 15 & 16! This meet was quite a challenge as the course designer (Ron Hudson) was not available to actually hang the controls. This was solved with the help of several "bag hangers." Many thanks to **Dan Coombs, Garey Cash, and Jackie Markus** who went out on Saturday afternoon, in the rain, and hung controls. Greg helped Garey and Jackie set a couple controls, and apparently led them astray on one. He found that it is more difficult to find a 4" long strip of flagging tape than a big orange control bag. Some course vetting was done by **Jeff Brucker**.

After cooling the afternoon temperature, the rain let up in time for dinner Saturday night. The night found Dan, Kevin, Ann, and nephew Matt playing a rousing round of Yahtzee. Peg Davis showed up in time for lively discussions covering nearly every topic from A-Z.

Early Sunday morning, the White course was deemed too difficult. Again, **Dan Coombs** came to the rescue, and designed and set a new course. Many volunteers stepped up to help this meet run smoothly. The timing table was manned by **Garey Cash, Jackie Marcus, Keith McLeod, and Dan Coombs**. Registration was handled by **Jeff Brodsky** and **Pete Cowgill**. Miscellaneous set-up was performed by **Pete** and **Judy Cowgill, Keith McLeod, and Jeff Brucker**. Beginners' clinics were handled by **Peg Davis** and **Keith McLeod**. Control retrieval (without these people, those controls would not make it back) was accomplished by **Pete and Judy Cowgill, Kevin Gross, David Barfield, and Jeff Berringer**.

There were 36 entries; many of them were new to orienteering. We hope they enjoyed their experience and will come back for more.

## Red Course

1M	Jeff Brucker	115:24
2M	Alexandre Savine	130:12
3M	Jeff Brodsky	148:10
	Don Fallis	DNF
	Team Awakening	DNF

## Green Course

1M	Jeff Berringer	119:34
1T	Beauty and ...	156:07
2M	Gary Thomas	161:50
1W	Peg Davis	199:35
	Joaquin Fox	Rec.

## Orange Course

1T	Team Opel	72:28
1W	Carol Brucker	76:54
2T	RIGA	77:04
3T	Osa's Team	86:20
2W	Pat Penn	91:28
1M	Chuck O'Hara	115:04
2M	Andre Lehovich	130:16
	LIW	146:50
	Banana Slugs	Rec.
	Team Light	Rec.
	Thompsons	Rec.

## Yellow Course

1T	Labradors	80:36
1M	Dave Barfield	86:38
2T	Edwards Family	118:10
	Bob Munsen	Rec.
	Pooch Patrol	Rec.

## Control Freaks

Ocotillo	Rec.
Gutt Family	Rec.
Patrice Barkley	DNF

## White Course

1T	Slobbery Wallow Dogs	56:43
2T	Gutt Family	59:43
	Bob Munsen	Rec.
	Ocotillo	Rec.
	Control Freaks	Rec.
	Bill & Helen Arthur	DNF

## Newsletter Submittals

The deadline for newsletter items is shown in the monthly calendar. Please try to meet the deadline, or call the editor if there is a problem. All members are invited and encouraged to send informational or opinion articles on any orienteering topic.

Phone: 296-2108 Fax: 290-8071

E-mail: loiskim@aol.com

US mail: 9055 Calle Bogota,  
Tucson, Arizona 85715.

*Lois Kimminau, Editor*

## Mapmaking Trivia

—John Maier

How much did TSN pay for the base map for the Chimney Rock map?

- |           |           |
|-----------|-----------|
| A) \$400  | B) \$800  |
| C) \$1100 | D) \$2100 |

At our last business meeting, several numbers were cast about, so I decided to research it by pulling out letters from Chris Wilmott (Australia), who did our base, and reports from Sun\*Fest (Roger Sperline) which relate to it. We need to know the correct costs before we can make decisions on how to make best use of our map funds.

The correct answer is A. We spent \$800 for the work Chris Wilmott did for us in producing the base maps for Chimney Rock and Italian Trap. Each of these is roughly one-half of the total amount.

Therefore, it is far less expensive than most believed. Perhaps the amount was confused with what was spent for field checking, always the most expensive cost in producing any new map, unless it is done strictly by volunteers.

# June 18 at the Palisades

—Pete & Judy Cowgill

Rain . . .!

Glorious, soaking, cooling, refreshing rain.

Actually, the afternoon and evening drizzle was the day before our Sunday meet at Showers Point, near the Palisades Ranger Station, elevation 7,800 feet. This wet stuff didn't dampen the spirits of the 20 or so orienteers who huddled under the group ramada at Showers Point Saturday evening. Sasha Savine built a campfire in the group ramada fireplace, where we warmed our front- and backsides while cooking dinner.

Sunday morning was cool and clear. The showers Saturday didn't dissuade 80 competitors from signing up for the meet Sunday morning. The Saturday showers also produced acres of damp pine needles and slick rock to navigate.

Mark Parsons raced his way to the top spot in the 12-control Red course with a time of 78 minutes, 37 seconds. The Bisbee Flash handily out-dueled his old nemesis John Maier, who couldn't navigate Jeff Brucker's long advance, up-and-down course with the same speed and accuracy. John's second place time was 87:51 in the nine-entry field. Dan Coombs took third place with 104:02.

Although starting last, John Little wiped out the competition on the Green (short advance) 10-control course with a time of 71:20. Second and third places went to Kevin Gross in 115:35 and Team Open with 127:22.

The 12-control intermediate Orange class was topped by Jeff Berringer in a time of 97:59. The Catalina Javelina team took second in 105:45, while Leopards 1 came in third in 146:29.

The Gator team rolled over all competitors in the long 15-control Yellow course with a time of 68 minutes flat. The four-man CIT team took second in 91:09, while the Mikelby team was right behind with 93:20.

The first-time orienteering Labrador team ran the 11-control White beginner course in a record time of 36:19. Team Rivera was second in 47:05, while Leopards 2 took third with 51:12.

This was the first time we had taken over the job of being the directors of a TOC meet. We had a great time, putting faces on the names of many teams and individuals whom we had seen in person, and whose names had been published in prior TOC newsletters. We found out that being Meet Directors is a great way to meet your fellow orienteers.

We had so much volunteer help, it is hard to know where to start the "thank yous." **Keith McLeod** helped Judy set up and register the first few orienteers. And Keith did the same for Pete at the Start/Timing table. We would have had a much tougher time getting the hang of running a meet without his help.

**Jeff Brucker** did a masterful job of setting the various courses, preparing and printing the maps, and setting courses. Judy and Pete helped vet the longer courses on the weekend before the meet, and we also hung some controls the day before the meet.

**Mike Huckaby** and **Cathy Waterman** checked maps for accuracy, and vetted and hung controls on both weekends. Mike inadvertently vetted and hung one Green control, so he ran the Green course in the Recreational category.

**Josh Stamm** also helped set controls on Sunday.

We had plenty of eager volunteers for control retrieval as the afternoon clouds threatened: **John Maier, Mark Parsons, Jeff Brodsky, Jeff Berringer, Sasha Savine, Keith McLeod, and Jackie Ciccolo.**

TOC President **Peg Davis** guided us around many of the lurking pitfalls of our baptism by fire as meet directors. She taught the early beginners' clinic, and **Keith McLeod** did the same for the later arrivals.

If you helped out and we missed printing your name, we're sorry, and we promise to do better next time.

Nobody got lost or hurt and everyone checked back in by the 2 p.m. deadline.

White Course			Yellow Course			Cathy Waterman,		
1T	Labradors	36:19	1T	Gators	68:00			Leopards 2,
2T	Team Rivera	47:05	2T	CIT	91:09			Team Rivera
3T	Leopards 2	51:12	3T	Mikelby	93:20	DNF		Doolen
Rec:	Doolen, Rabid Monkeys, Team Kirsher, Patricia Barkley, CIT, Sky Watchers, Osa's Team		1M	Josh Stamm	108:15			
			Rec.:	LIW, Team Artiste 3 Squeegies, Cool Dogs,				

Continued on page 4

## Continued from page 3

**Orange Course**

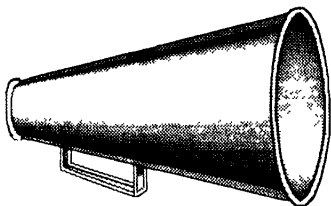
1M	Jeff Berringer	97:59
1T	Catalina Javelinas	105:45
2T	Leopards I	146:29
2M	Gary Thomas	150:35
3M	John Couleur	172:29
Rec.	Jeffrey Fisher, Coyote	
DNF	Hose Heads	

**Green Course**

1M	John Little	71:20
2M	Kevin Gross	115:35
1T	Team Opel	127:22
2T	Free Rangers	171:00
3T	Team O'Hara	237:50
Rec.	Mike Huckaby	
DNF	Europe, MALO, Keith McLeod	

**Red Course**

1M	Mark Parsons	78:37
2M	John Maier	87:51
3M	Dan Coombs	104:02
Rec.	Jeff Brodsky, Savine Team, Larry Lamb	
DNF	Mikelby, Peg Davis, Mark Everett	



### Hey, All You Post-ROGAINE Haulers and Draypersons:

If you brought any club equipment toward Tucson after the ROGAINE at the Mogollon Rim in May, and you still have any of it, please call the Equipment Chair, Mary English, at 881-4786. Among the items we're looking for: a Gott water cooler, folding chairs, display boards, canopy and poles in a maroon duffel bag.

THANKS!

## COMING NEXT MONTH:

## September Preview: Club Picnic and Long-O

—John Maier

For the weekend of September 15-17, we'll be on the Mogollon Rim. Drive up Friday afternoon or evening and camp out for two nights. We'll be on a new O-map generated from the 1998 Mogollon Rim ROGAINE. It will be at 1:15,000 scale in color with a contour interval of 20 feet.

The featured O event will be a two-day Long-O with five courses (beginner through advanced). On Saturday, participants will have a mass start for a two-hour Score-O, which will be used to generate start times for Sunday's chase start on the five point-to-point (normal style) courses. However, Sunday's courses will be 50 percent longer than normal lengths. That's what makes it a Long-O. The first person back from each of Sunday's courses will be the overall winner for that course.

But there's more! Saturday evening we'll have a potluck dinner, so bring a dish to share. We'll work up appetites in our Water War-O. Two sides will try to out-maneuver each other to capture objects on the water. Bring any paddle crafts you have: inner tubes, inflatable rafts, kayaks, canoes, etc. Bring more than one if you have more. That way, there will be more options for victory. The Water War-O will be in the afternoon.

Following dinner, as the stars begin to twinkle, we'll have a Night-O so you will have the opportunity to get good and tired before going to sleep.

So that's what's in store for September. Details will follow in next month's newsletter.

## Business Meeting

—Peg Davis

Motions passed:

- The Club will purchase 20 new controls and two fold-up picnic tables for use at meets.
- There is no interest in a club ranking series.
- Treasury report: We're loaded! Let's spend money on maps.

Approaches were discussed for improving old maps and creating new maps. At the next meeting the Map Chair will propose three old and one new area for development. The most appropriate methods (hiring field checkers, volunteer field checkers, photogrammetry, aerial photos) will be discussed and decided. Budget will be decided.

Increasing volunteerism at meets: At the next two meets, meet directors will be relieved of making advance phone calls asking for volunteers. Instead, participants will be advised that a shortage of volunteers at any area will be relieved by the next person in line taking over for a half hour. At the end of two months, results will be reviewed and this method will be retained or discarded.

Next Meeting: The next business meeting will be to develop a plan of action for mapping. Those interested in working on the maps in any way are encouraged to attend. It will be at 6:30 p.m., Wednesday, August 23, at Casa Peg Davis, 2241 East Parkway Terrace. Call 628-8985 for directions or with questions.

**ORIENTEERING OUT OF TOWN!  
REPORTS FROM THE  
CONVENTION AND "A" MEETS.**

## CLUB CALENDAR

### August 20, Lincoln City Park

Course Setters: Roger Sperline &  
Sue Roberts (577-8519)

Course Vetter: Vacant

Meet Director: Mike Thompson (742-9687)

### August 23, Business Meeting

Details on page 4.

### August 28, Newsletter Deadline

Submittal information on page 2.

### September 16-17, Mogollon Rim Special Event

Course Setter: John Maier (520-586-7300)

Course Vetter: Vacant

Meet Director: Vacant

### October 14-15, State Champs, Down Route 83

Course Setter: Dan Coombs (322-9758)

Course Vetter: Vacant

Meet Director: Vacant

### November 19 (& maybe 18), Silver Bell Mountains

Course Setter: Kevin Gross (326-0739)

Course Vetter: **First Time Setter**

**Needs a Vetter**

Meet Director: Vacant

### December 17, Cat Mountain

Course Setter: Jeff Brucker (886-2528)

Course Vetter: Vacant

Meet Director: Vacant

TSN Club meets are held regularly on the third Sunday of the month, year-round.

Experienced course setters are usually happy (with advance notice of about a month) to work with apprentices who want to learn to set courses. If there is enough interest, separate training for course setting can be organized.

Directing a meet consists essentially of setting up and supervising the Registration and Timing areas, with help from other volunteers. Teams of two are encouraged.

Please call Peg Davis at 628-8985 if you can help with any of these meets.

*We were saddened to hear of the death of member  
Francisco Luttmann.*

*Our deepest sympathy is extended to his wife, Jill,  
and children, Amber and Jose.*

### 1999-2000 TUCSON ORIENTEERING CLUB OFFICERS

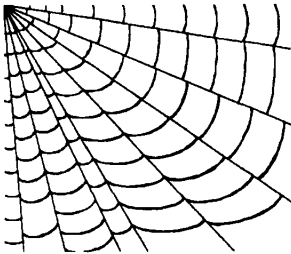
President	Peg Davis	pegdavis@u.arizona.edu	628-8985
Secretary/Treasurer	Jeff Berringer		388-9473
Membership	Jeff Brodsky	jabrodsky@worldnet.att.net	886-6304
Mapping	Jeff Brucker	jeffbrucker@prodigy.net	886-2528
Equipment	Mary English		881-4786
Permits	C. Michael Thompson	cmthomps@u.arizona.edu	
Publicity/Education	Carol Brucker	carolbrucker@prodigy.net	886-2528
Newsletter Editor	Lois Kimminau	loiskim@aol.com	296-2108

Tucson Orienteering Club  
P O. Box 13012  
Tucson, AZ 85732

Address Service Requested



**Early-O on  
August 20!**



Check out the Tucson Orienteering Club web site!  
<http://www.fortunecity.com/greenfield/bypass/733/>  
or type <http://go.to/tucsonorienteering>  
Also, for links to all the West Coast club sites,  
just type <http://go.to/sconet>

### Tucson Orienteering Club Membership Application

Check one: New Member       Renewal       Date on label \_\_\_\_\_

Check one: Individual (\$10)       Household (\$15)

Name: \_\_\_\_\_      Telephone: \_\_\_\_\_

Address: \_\_\_\_\_      E-mail: \_\_\_\_\_

Can you help staff a club meet?  Yes, call me.

Members receive a monthly newsletter, have voting privileges and access to Club library, and receive a \$5 discount per meet. Make checks payable to Tucson Orienteering Club and send to P. O. Box 13012, Tucson, AZ 85732.